

∴

( )

2

3

- 
- 
- " " -
- 2- 14-
- 2014

- 2015, 2016 2017
- 2013-2014
- 2014

- 
- 
- -

- 
- 

- 
- 2014 I II
- 
- 
- 
- 
- 
- 

- 2013-2014

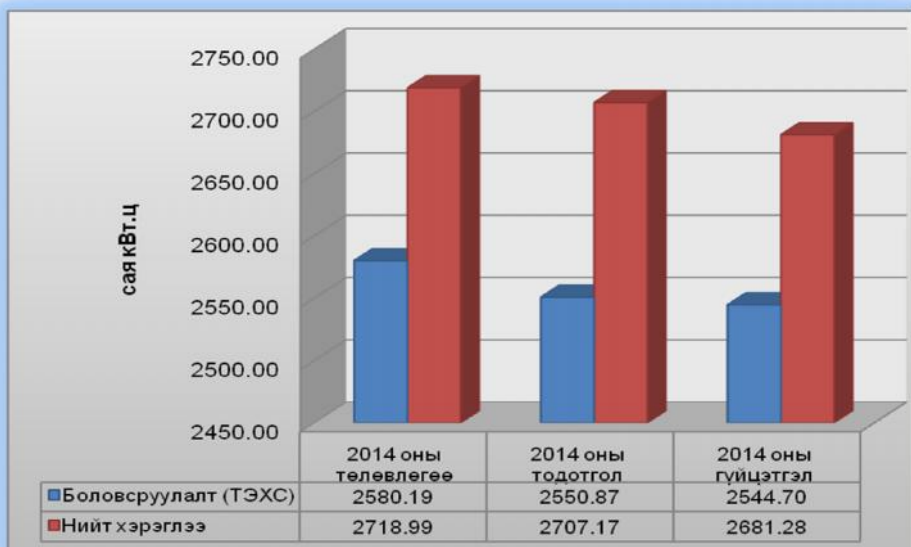
“ ” - 2014

- 2014 01- 16- 4/158 , 01- 24- 4/238 , 2014 06- 09- 4/2037  
 “ ”- 3.1.9 - , 2014  
 1- 2- , .  
 2014 2544,6  
 98,6%, 98,6%, 99,0%- 99,8%, 2681,2  
 98,6%, 14,1 , 10,4  
 2014 - , .

	2014	2014	2014		%		%
-2	66,707.00	68,420.00	69,391.98	2,685.0	104.0%	972.0	101.4%
-3	435,888.00	379,576.00	381,912.90	-53,975.1	87.6%	2,336.9	100.6%
-4	1,782,223.78	1,803,236.17	1,815,431.02	33,207.2	101.9%	12,194.8	100.7%
	133,650.00	133,650.00	133,721.09	71.1	100.1%	71.1	100.1%
	81,036.00	81,036.00	81,038.81	2.8	100.0%	2.8	100.0%
“ ”	80,689.08	86,824.51	63,200.77	-17,488.3	78.3%	-23,623.7	72.8%
	<b>2,580,193.86</b>	<b>2,550,872.08</b>	<b>2,544,696.56</b>	<b>-35,497.3</b>	<b>98.6%</b>	<b>-6,175.5</b>	<b>99.8%</b>
	138,800.00	147,400.00	136,582.34	-2,217.7	98.4%	-10,817.7	92.7%
	16,200.00	16,200.00	14,091.55	-2,108.5	87.0%	-2,108.5	87.0%
	0	0	0	0.0		0.0	
	0	0	0	0.0		0.0	
	<b>2,718,993.86</b>	<b>2,707,172.08</b>	<b>2,681,278.89</b>	<b>-37,715.0</b>	<b>98.6%</b>	<b>-25,893.2</b>	<b>99.0%</b>

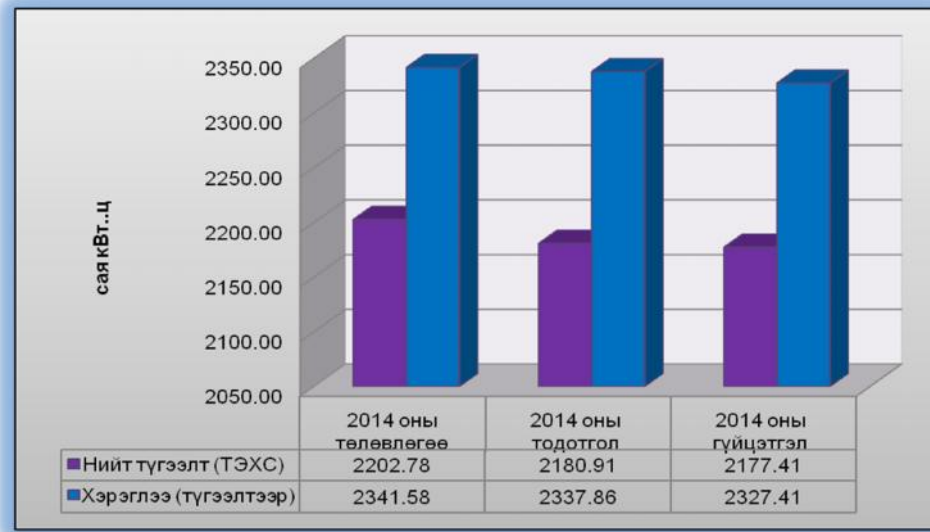
2014

	2014	2014	2014		%		%
-2	56,577.00	58,045.00	58,706.11	2,129.1	103.8%	661.1	101.1%
-3	346,873.00	300,887.30	301,362.37	-45,510.6	86.9%	475.1	100.2%
-4	1,550,723.78	1,569,273.77	1,581,841.32	31,117.5	102.0%	12,567.6	100.8%
	107,010.00	107,010.00	109,090.37	2,080.4	101.9%	2,080.4	101.9%
	64,139.00	64,139.00	64,664.08	525.1	100.8%	525.1	100.8%
	77,461.52	83,351.53	61,741.75	-15,719.8	79.7%	-21,609.8	74.1%
	<b>2,202,784.30</b>	<b>2,180,910.83</b>	<b>2,177,406.01</b>	<b>-25,378.3</b>	<b>98.8%</b>	<b>-3,504.8</b>	<b>99.8%</b>
	138,800.00	147,400.00	136,582.34	-2,217.7	98.4%	-10,817.7	92.7%
	16,200.00	16,200.00	14,091.55	-2,108.5	87.0%	-2,108.5	87.0%
	0	0	0	0.0		0.0	
	0	647.10	13,417.73	13,417.7		12,770.6	
	<b>2,341,584.30</b>	<b>2,337,857.93</b>	<b>2,327,406.08</b>	<b>-14,178.2</b>	<b>99.4%</b>	<b>-10,451.8</b>	<b>99.6%</b>



2014

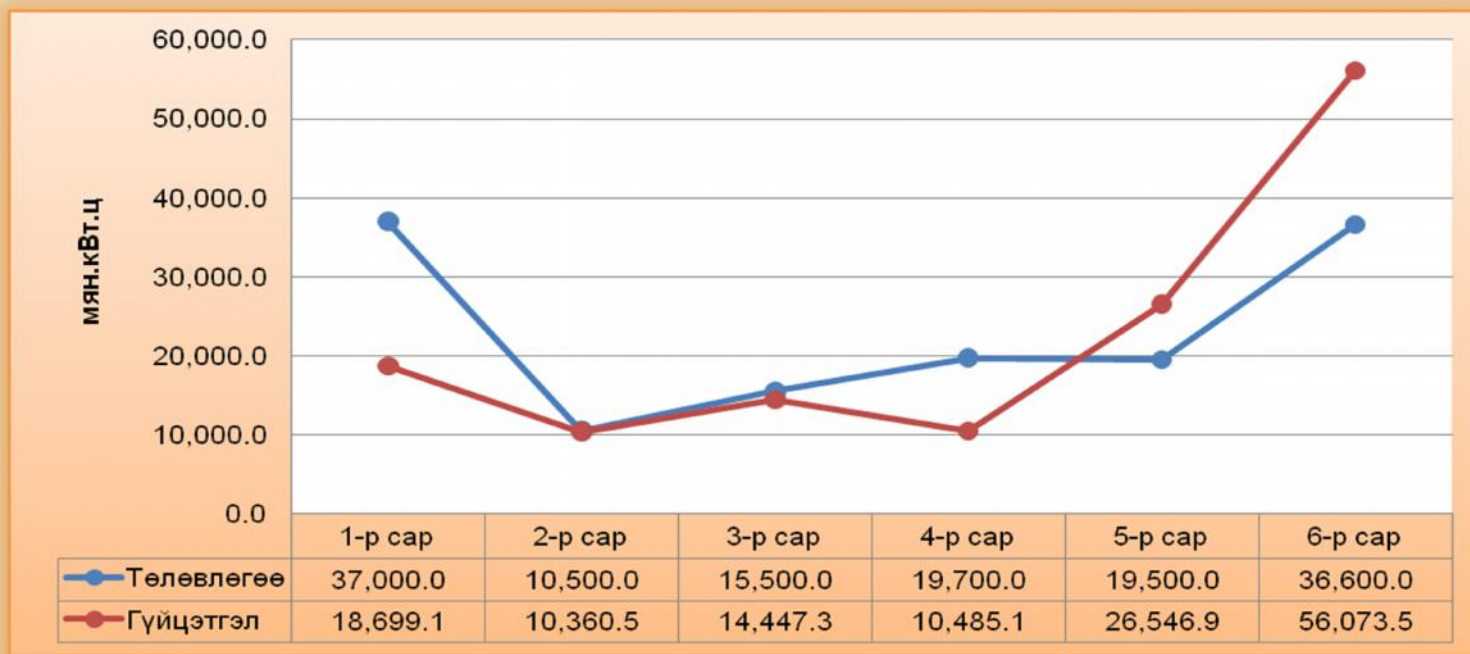
( )



2014

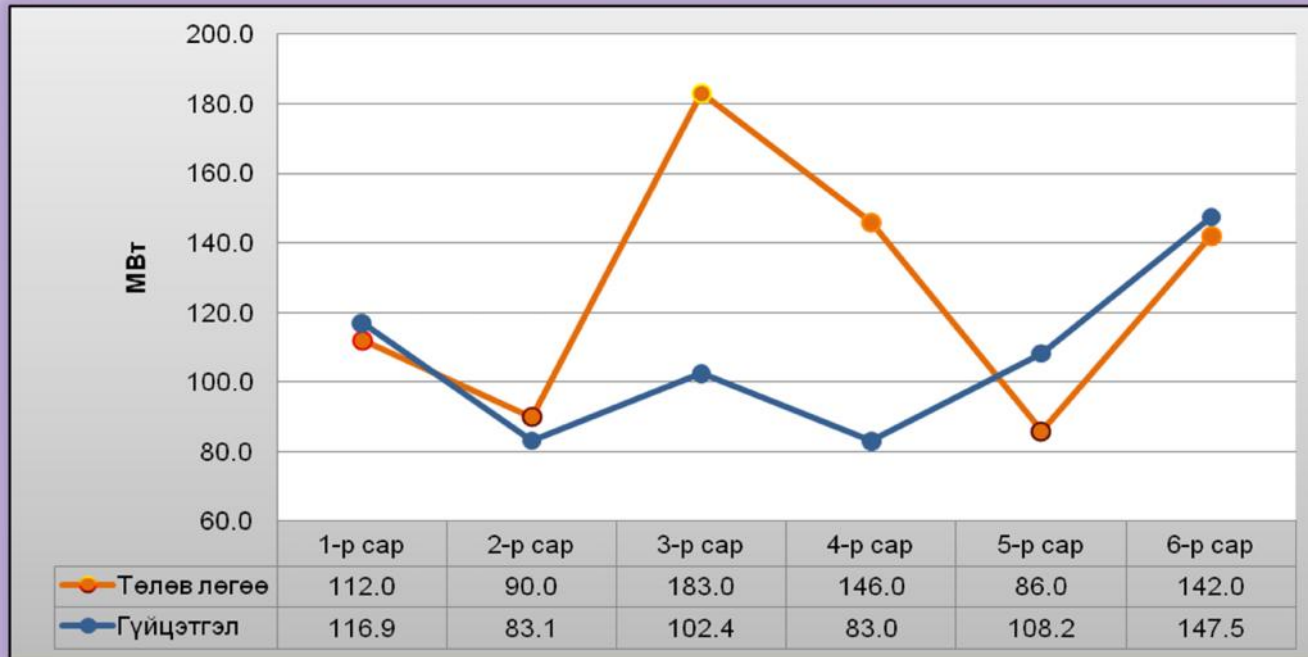
( )

2014 136,6 7,3 - 2,2 4,9 %- 138,8 2013



106,8

31,4 -



“ ” - 2014

, , :

\_\_\_\_\_ :

2013	-	4909,242	.	2013	-2,	-3,	-4	-	.
62.2%-	-4	1,4%-	.	2013	3.3%-	-2	, 34.5%-	-3	70,2
2012-2013				2013-2014	85,4	150 / -		77,0 / -	

				2013-2014		2013	85,4 / -	
--	--	--	--	-----------	--	------	----------	--

2014	-3	-4	-	100	50	-	-4	-	189 /	185 / -
------	----	----	---	-----	----	---	----	---	-------	---------

2014	(2014	30000	,	)	,	100000	8%-
------	-------	-------	---	---	---	--------	-----

2014	,					100,0-150,0	/
------	---	--	--	--	--	-------------	---

\_\_\_\_\_ :

2012	20	12,8	.	2,8%-	.	2013	464,305	.
200,7 / ,	2,0 /	4,13 / -				2013-2014		.
						2013		

“ ” - 2014

3.0-5.0%

2010

2013 492,277

2-3%

2013 515,763

2014

503,0

8,8%-

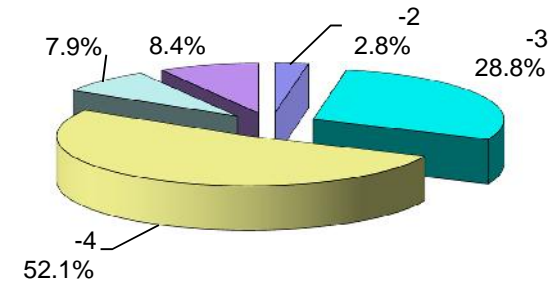
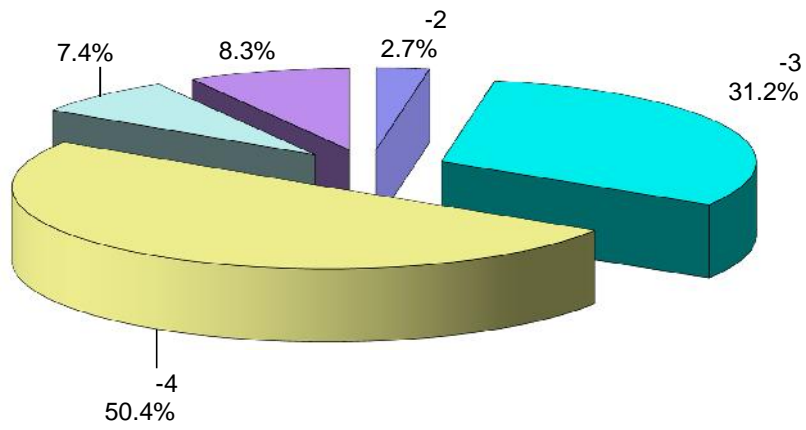
2024

	2011	2012	2013	2014	2015	2016	2017	2018	2019	2024
	5080254	5444332	5375996	5619793	5872684	6125209	6339591	6517100	6680027	7348030
	453630	463382	474881	500240	515247	530705	543972	557572	571511	628662
	521674	521844	530710	530888	538851	546934	552403	557927	563507	605770
:	6055558	6429558	6381587	6650921	6926782	7202848	7435967	7632599	7815045	8582462
:		106.20%	99.30%	104.20%	104.10%	104.00%	103.20%	102.60%	102.40%	109.80%

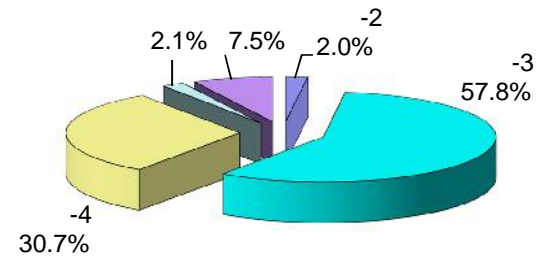
(2013 ):

\_\_\_\_\_:

\_\_\_\_\_:



\_\_\_\_\_:





		2014	2019	2024	2029
/ /		4625861.317	5981041.042	7790068.127	10091712.436
		4598057.115	5940173.782	7720131.440	9964193.747
		4449449.352	5736664.292	7437193.168	9562961.796
		136030.028	179294.8	236320.0	311482.3
/		12577.735	24214.7	46618.3	89749.6
		148607.763	203509.490	282938.272	401231.951
%		3.23%	3.43%	3.59%	3.75%
		2429107	3579283.4	4659867.0	4792111.8
		6518	42158.6	272684.3	868790.0
		11677	18687.0	29906.5	43635.9
		42421	148150.1	517398.8	1806961.6
		12896	47109.0	48461.1	49852.1
		2502618.391	3835388.2	5528317.7	7561351.3
		469596.716	380260.6	307919.8	249341.1
		7891.610	8550.1	9263.4	10036.4
		3899.314	5571.5	7960.8	11374.7
		29607.775	30031.3	25623.1	21862.0
		510995.415	424413.4	350767.2	292614.2
		945519.220	954362.0198	1008708.63	1122321.515
:		723947.3	642936.1	570990.2	507095.2
		221571.9	311425.9	437718.4	615226.3
		1437.4	2222.9	3437.7	5316.3
		40467.0	50638.7	63367.2	79295.1
		33195.7	46243.9	64421.0	89742.9
		28252.0	27147.4	26086.0	25066.1
-		25858.6	53576.57	63446.63	67968.62
		1074729.948	1134191.54	1229467.12	1389710.51
		297163.891	274031.3	252699.4	233028.1
		33414.080	30153.3	27210.8	24555.4
		330577.971	304184.61	279910.19	257583.51
		30395.781	38486.6	48731.0	61702.2
		30395.781	38486.6	48731.0	61702.2

5,10,15  
5-7%-  
/ 2024 / 2019 5,9  
7,7 . , 2029 . , 10

“ ” - 2014

, :

:

✓ - 35/6 - , 110/35/10 - 16

✓ 2014-2015

✓

✓

✓ -4, -3-

✓ " " -  
✓ " -3" - 50 -

✓

4

PowerFactory

✓ - 2014

2

✓ - 2014

2

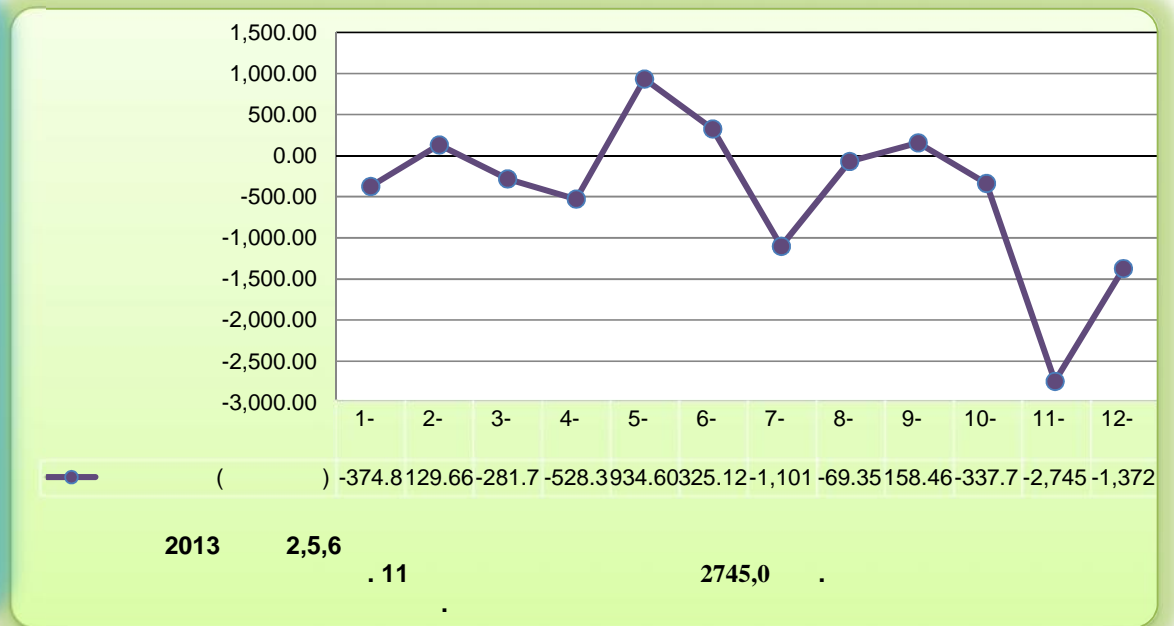
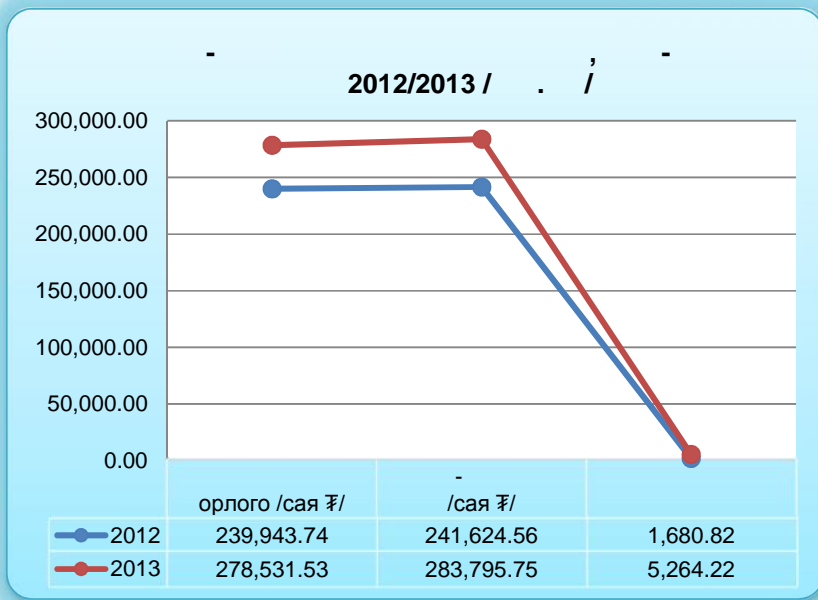
✓ -3-

35 -

✓

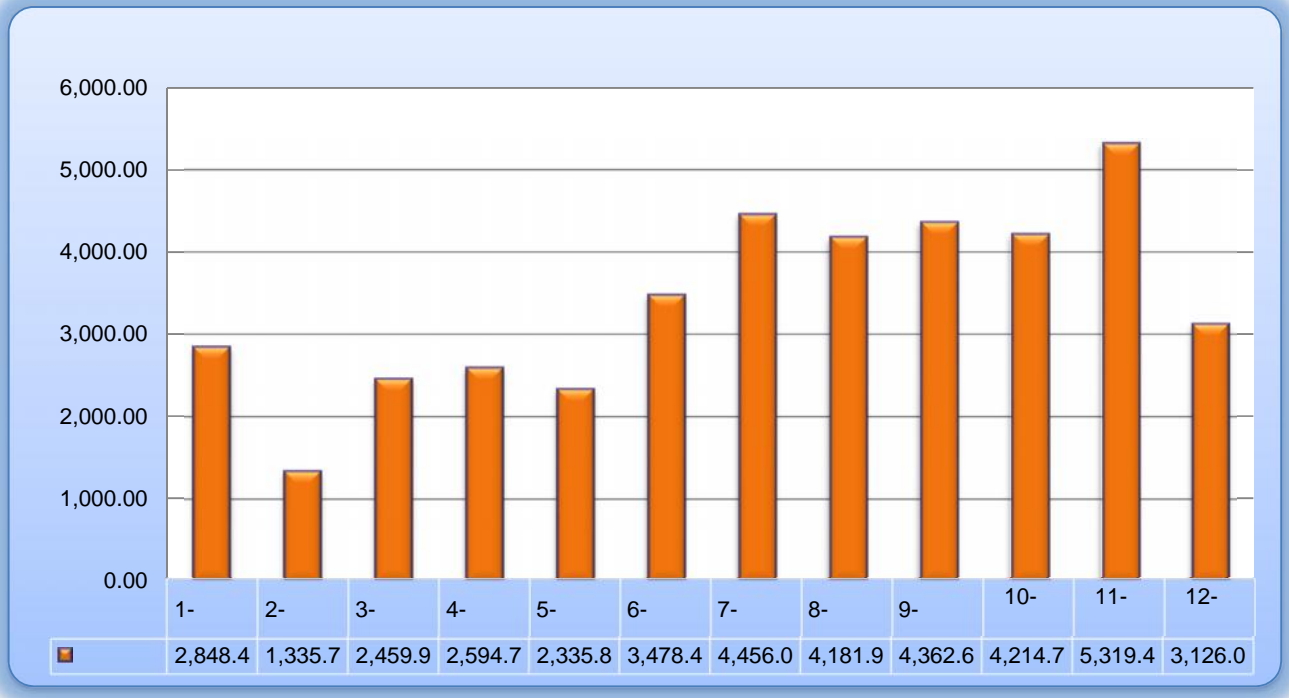
**2013** - :  
 - 2013 5,264  
 2013 8 - “ ” 28,6 -  
 , 4759,5 .  
 - **2013** / . /  
 1.

- 2013  
 3,583.4  
 “ ”  
 28,6 -  
 4759,5 .  
 - **2013** / . /  
 2.



**2013** - нийгэмтэн ЦЭУ-ийг төлбөрийн сувгаар /сая ₮/

3.



2013 11- - 5,3 2,2

✓ -4 - 4- 16,8

✓ 7,0 c - 14,4

72,07 / 6,02

2014

5

12

“ ” - 2014

- 2014 5

1, 4-

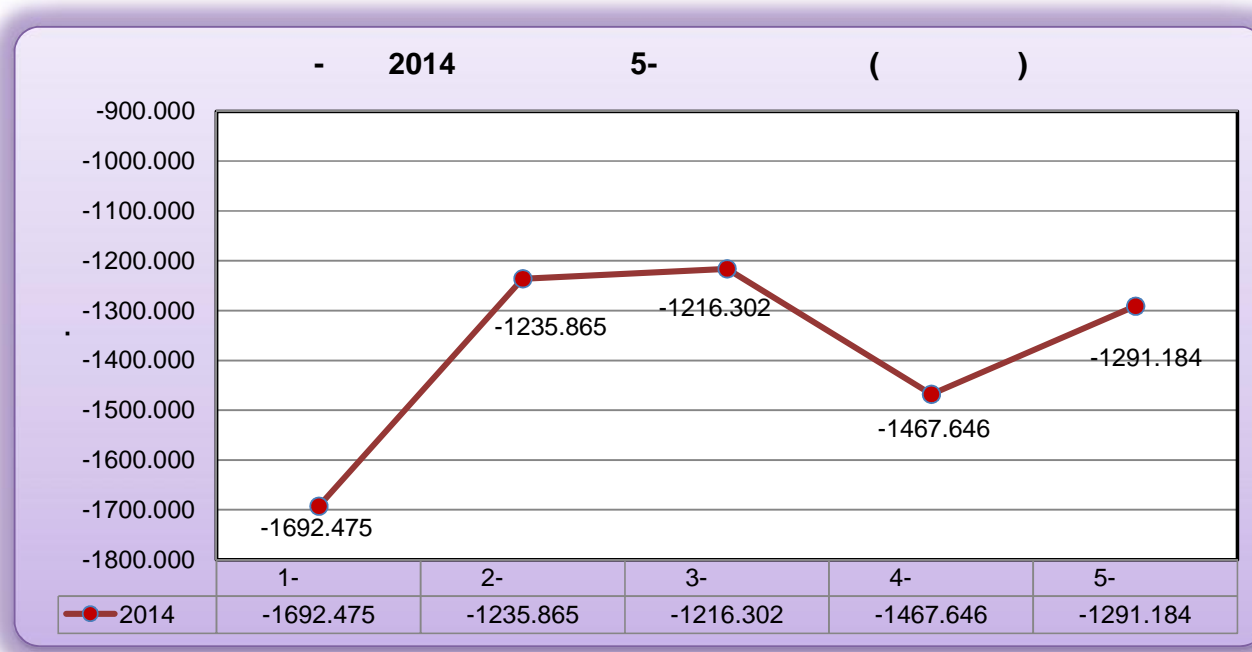
( )-

4-  
6,903

2014

5 1,5-

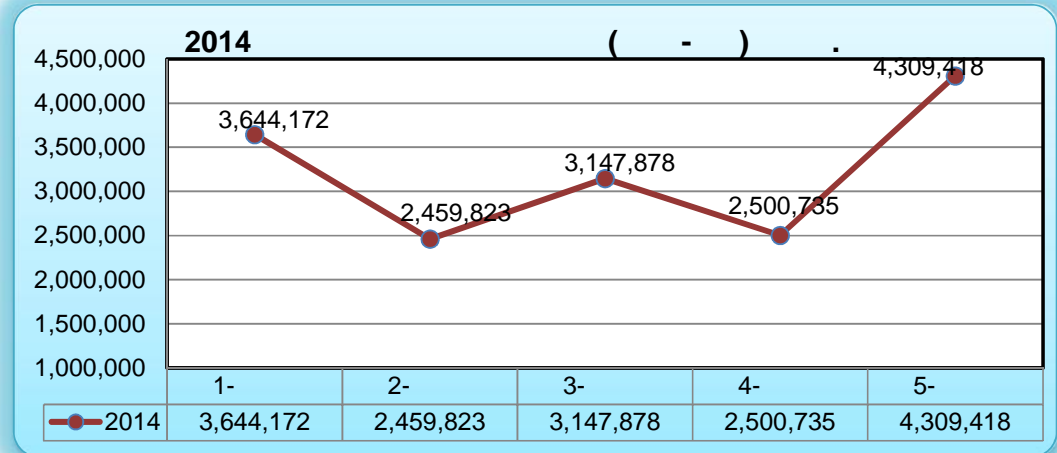
4



2014 5-

5

				/ - /
1-	28,100,0	18,669,1	-9,430,9	3644172,0
2-	6500,0	10,360,5	3,860,5	2459823,0
3-	15,500,0	14,447,3	-1,052,6	3147878,0
4-	19,700,0	10,485,1	-9,214,9	2500735,0
5-	19,500,0	26,546,8	7,046,8	4309418,0



“ ”  
 л (00:00-08:00 цагунд) диспетчерийн шийлвэрийг биелүүлээгүйн улмаас  
 - 27 / “ ” - 0,095\$/ ( 173₮)-

“ ” - 2014 5

	(00:00-08:00)	/ - / (00:00-08:00)		/ - /	/ - /	“ ” - / - /
01-	862,0	3464.7	2602.7	231,0	2341.4	1636.2
02-	999,0	1904.2	905.2	857,0	2372.5	475.2
03-	1952,0	2791.3	839.35	507,0	1923.0	537.6
04-	2538,0	2434.99	-103.0	2257,0	3632.0	185.1
05-	3832,0	3531.5	-300.5	170,0	1232.4	335.0
	10183,0	14126,7	3943,7	4022,0	11501,4	3169,2

“ ” - 2014

5 00:00-08:00 10183,0 . . . 3943,7 . . .  
 10595,3 . . . -  
 3169,2 . . .

5 3169,2 . . . - 27,0  
 85,567 “ ” - (173 )- 548,271,6 . . .  
 - 462,704,6 . . . “ ” -

- - , . ( . . )

		1-			2-			3-			4-			5-		
		547898	545308	-2590	470750	475557	4807	475303	474524	-779	436488	410068	-26420	407365	414988	7623
	-2	11300	11661	361	10800	11100	300	12256	12231	-24	12050	12668	618	10000	10617	617
	-3	88784	85772	-3012	78748	81600	2852	70184	71127	943	67920	67725	-195	76632	46330	-30302
	-4	357859	366316	8457	320534	320940	406	323110	325656	2546	288015	276032	-11984	258820	291409	32589
		30500	30257	-243	27460	26853	-607	24930	24859	-71	21840	21658	-182	17090	17648	558
		19870	19836	-34	16072	16525	453	16064	15756	-308	11726	11731	5	8664	8509	-155
		11470	12789	1319	10536	8177	-2359	13260	10448	-2811	15237	9769	-5468	16660	13928	-2731
		519783	526640	6857	464150	465196	1046	459803	460077	274	416789	399583	-17206	387866	388442	576

1- :  
 • 2590 . . . - 9430,9 . . . -  
 -3 - 3 I/23-I/31- 3011,5 . . . - 234,2 . . . -  
 33,7 . . . - 3279,4 . . . - -4  
 “ ” 1- 1, 2, 5, 6, 8, 9, 12, 13, 17, 18, 20,  
 21, 23, 24, 25, 26, 27, 31- (00:00-08:00 )  
 2602,7 . . . - 1636,24 . . . -

2- :  
 • 4807 . . . - , 607,0 . . . - , “ ” 2359,2 . . . -  
 7773,2 . . . - 3860,5 . . . -

“ ” - 2014

406 . . - -4 , 299,7 . . - -2 , 2852 . . - -3 , 453 . . -

• 690 . . 475,2 . . - “ ” 1, 2, 4, 5, 6, 9, 14, 17, 19, 22, 24, 25, 26, 28-

3- :  
• 778,8 . . - - 1052,7 . . - -4

2546,2 . . 273,2 . . “ ” - 2272,9 . .

2811,0 . . -

• “ ” 6, 9, 10, 11, 14, 15, 16, 17, 18, 19, 20- 839,35 . . , 537,64 . . -

4- :  
• 410068 . . 26420,5 . . - “ ” - 9215 . . , -4

4- +6,4<sup>0</sup> - ,

11983,5 . . - “ ” - 5468,0 . . -

• “ ” - 103,0 . . - 3, 4, 6, 11, 28- 185,0 . . -

5- :  
• 414988,0 . . 7623,0 . . - , -

7046 . . - , -2 617,0 . . -

• “ ” - 335,0 . . -  
• 32589 . . -3 30302 . . - , “C ” C 2731,0 . . - -4

82.9 % 2014 1699,9 . . - 2050, 07 . . 3 6,8% 140,6 . . , 6,7 %  
139,2 . . , 2 2,1% 43,9 . . -





14100	-	109100	-	2,5 %-
136,61	,	2014	.	

1-

000